

**NOTAS**

1. VERIFICAR DIMENSÕES E MATERIAIS.
2. VERIFICAR O TIPO DE PASSADORES.
3. VERIFICAR O TIPO DE PASSADORES.
4. VERIFICAR O TIPO DE PASSADORES.
5. VERIFICAR O TIPO DE PASSADORES.

**METAL - PASSADORES**

**RELAÇÃO DO AÇO**

ITEM	QUANTIDADE	UNIDADE	VALOR	TOTAL
1	1	kg	100	100
2	1	kg	100	100
3	1	kg	100	100
4	1	kg	100	100
5	1	kg	100	100
6	1	kg	100	100
7	1	kg	100	100
8	1	kg	100	100
9	1	kg	100	100
10	1	kg	100	100
11	1	kg	100	100
12	1	kg	100	100
13	1	kg	100	100
14	1	kg	100	100
15	1	kg	100	100
16	1	kg	100	100
17	1	kg	100	100
18	1	kg	100	100
19	1	kg	100	100
20	1	kg	100	100
21	1	kg	100	100
22	1	kg	100	100
23	1	kg	100	100
24	1	kg	100	100
25	1	kg	100	100
26	1	kg	100	100
27	1	kg	100	100
28	1	kg	100	100
29	1	kg	100	100
30	1	kg	100	100
31	1	kg	100	100
32	1	kg	100	100
33	1	kg	100	100
34	1	kg	100	100
35	1	kg	100	100
36	1	kg	100	100
37	1	kg	100	100
38	1	kg	100	100
39	1	kg	100	100
40	1	kg	100	100
41	1	kg	100	100
42	1	kg	100	100
43	1	kg	100	100
44	1	kg	100	100
45	1	kg	100	100
46	1	kg	100	100
47	1	kg	100	100
48	1	kg	100	100
49	1	kg	100	100
50	1	kg	100	100
51	1	kg	100	100
52	1	kg	100	100
53	1	kg	100	100
54	1	kg	100	100
55	1	kg	100	100
56	1	kg	100	100
57	1	kg	100	100
58	1	kg	100	100
59	1	kg	100	100
60	1	kg	100	100
61	1	kg	100	100
62	1	kg	100	100
63	1	kg	100	100
64	1	kg	100	100
65	1	kg	100	100
66	1	kg	100	100
67	1	kg	100	100
68	1	kg	100	100
69	1	kg	100	100
70	1	kg	100	100
71	1	kg	100	100
72	1	kg	100	100
73	1	kg	100	100
74	1	kg	100	100
75	1	kg	100	100
76	1	kg	100	100
77	1	kg	100	100
78	1	kg	100	100
79	1	kg	100	100
80	1	kg	100	100
81	1	kg	100	100
82	1	kg	100	100
83	1	kg	100	100
84	1	kg	100	100
85	1	kg	100	100
86	1	kg	100	100
87	1	kg	100	100
88	1	kg	100	100
89	1	kg	100	100
90	1	kg	100	100
91	1	kg	100	100
92	1	kg	100	100
93	1	kg	100	100
94	1	kg	100	100
95	1	kg	100	100
96	1	kg	100	100
97	1	kg	100	100
98	1	kg	100	100
99	1	kg	100	100
100	1	kg	100	100

**RESUMO DO AÇO**

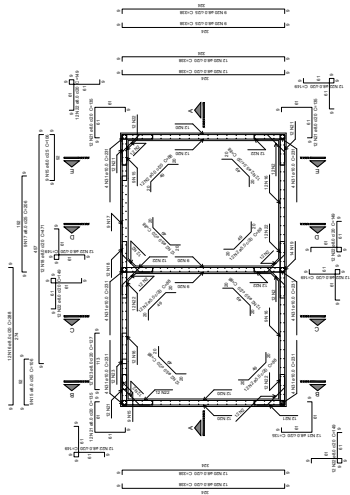
ITEM	QUANTIDADE	UNIDADE	VALOR	TOTAL
1	1	kg	100	100
2	1	kg	100	100
3	1	kg	100	100
4	1	kg	100	100
5	1	kg	100	100
6	1	kg	100	100
7	1	kg	100	100
8	1	kg	100	100
9	1	kg	100	100
10	1	kg	100	100
11	1	kg	100	100
12	1	kg	100	100
13	1	kg	100	100
14	1	kg	100	100
15	1	kg	100	100
16	1	kg	100	100
17	1	kg	100	100
18	1	kg	100	100
19	1	kg	100	100
20	1	kg	100	100
21	1	kg	100	100
22	1	kg	100	100
23	1	kg	100	100
24	1	kg	100	100
25	1	kg	100	100
26	1	kg	100	100
27	1	kg	100	100
28	1	kg	100	100
29	1	kg	100	100
30	1	kg	100	100
31	1	kg	100	100
32	1	kg	100	100
33	1	kg	100	100
34	1	kg	100	100
35	1	kg	100	100
36	1	kg	100	100
37	1	kg	100	100
38	1	kg	100	100
39	1	kg	100	100
40	1	kg	100	100
41	1	kg	100	100
42	1	kg	100	100
43	1	kg	100	100
44	1	kg	100	100
45	1	kg	100	100
46	1	kg	100	100
47	1	kg	100	100
48	1	kg	100	100
49	1	kg	100	100
50	1	kg	100	100
51	1	kg	100	100
52	1	kg	100	100
53	1	kg	100	100
54	1	kg	100	100
55	1	kg	100	100
56	1	kg	100	100
57	1	kg	100	100
58	1	kg	100	100
59	1	kg	100	100
60	1	kg	100	100
61	1	kg	100	100
62	1	kg	100	100
63	1	kg	100	100
64	1	kg	100	100
65	1	kg	100	100
66	1	kg	100	100
67	1	kg	100	100
68	1	kg	100	100
69	1	kg	100	100
70	1	kg	100	100
71	1	kg	100	100
72	1	kg	100	100
73	1	kg	100	100
74	1	kg	100	100
75	1	kg	100	100
76	1	kg	100	100
77	1	kg	100	100
78	1	kg	100	100
79	1	kg	100	100
80	1	kg	100	100
81	1	kg	100	100
82	1	kg	100	100
83	1	kg	100	100
84	1	kg	100	100
85	1	kg	100	100
86	1	kg	100	100
87	1	kg	100	100
88	1	kg	100	100
89	1	kg	100	100
90	1	kg	100	100
91	1	kg	100	100
92	1	kg	100	100
93	1	kg	100	100
94	1	kg	100	100
95	1	kg	100	100
96	1	kg	100	100
97	1	kg	100	100
98	1	kg	100	100
99	1	kg	100	100
100	1	kg	100	100



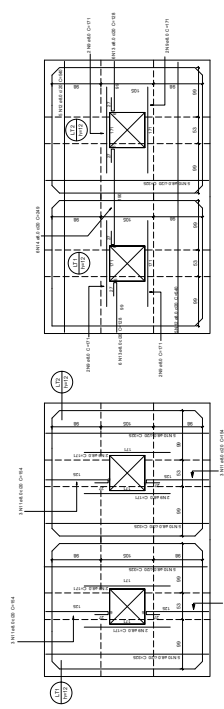
**ESTRUTURA**

UNB / FM  
 COMANDO DE OBRA  
 PROJETO DE ESTRUTURA

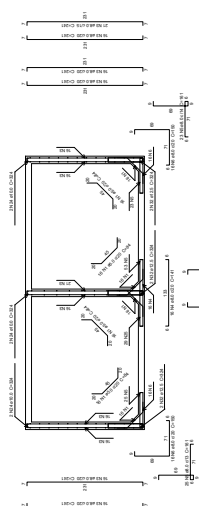
**EST 05/06**  
 DATA: 05/06/2006



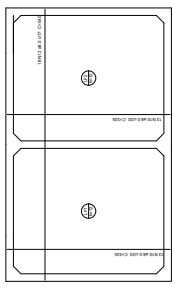
**RESERVATÓRIO 01  
PLANTA (-125.0)  
ESCALA 1:50**



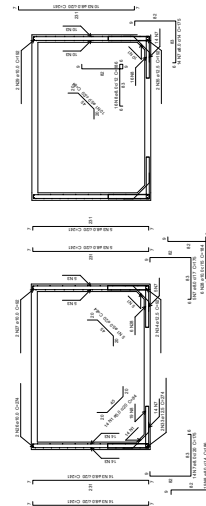
**RESERV. 01  
ARMACÃO POSITIVA LAJES (0.0) - TAMP  
ESCALA 1:50**



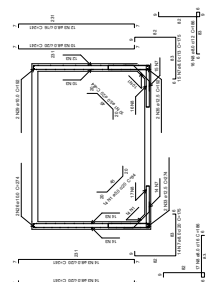
**RES1 CORTE A-A  
ESCALA 1:50**



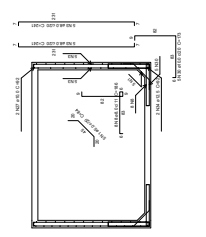
**RES1 CORTE B-B  
ESCALA 1:50**



**RES1 CORTE C-C  
ESCALA 1:50**



**RES1 CORTE D-D  
ESCALA 1:50**



**RES1 CORTE E-E  
ESCALA 1:50**

**RELAÇÃO DO AÇO**  
RELAÇÃO DO AÇO DE ARMADURA  
RELAÇÃO DO AÇO DE REFORÇO

ITEM	QUANTIDADE	DIÂMETRO	ESPAÇAMENTO	REMARKS
1	100	10	200	
2	100	10	200	
3	100	10	200	
4	100	10	200	
5	100	10	200	
6	100	10	200	
7	100	10	200	
8	100	10	200	
9	100	10	200	
10	100	10	200	
11	100	10	200	
12	100	10	200	
13	100	10	200	
14	100	10	200	
15	100	10	200	
16	100	10	200	
17	100	10	200	
18	100	10	200	
19	100	10	200	
20	100	10	200	
21	100	10	200	
22	100	10	200	
23	100	10	200	
24	100	10	200	
25	100	10	200	
26	100	10	200	
27	100	10	200	
28	100	10	200	
29	100	10	200	
30	100	10	200	
31	100	10	200	
32	100	10	200	
33	100	10	200	
34	100	10	200	
35	100	10	200	
36	100	10	200	
37	100	10	200	
38	100	10	200	
39	100	10	200	
40	100	10	200	
41	100	10	200	
42	100	10	200	
43	100	10	200	
44	100	10	200	
45	100	10	200	
46	100	10	200	
47	100	10	200	
48	100	10	200	
49	100	10	200	
50	100	10	200	
51	100	10	200	
52	100	10	200	
53	100	10	200	
54	100	10	200	
55	100	10	200	
56	100	10	200	
57	100	10	200	
58	100	10	200	
59	100	10	200	
60	100	10	200	
61	100	10	200	
62	100	10	200	
63	100	10	200	
64	100	10	200	
65	100	10	200	
66	100	10	200	
67	100	10	200	
68	100	10	200	
69	100	10	200	
70	100	10	200	
71	100	10	200	
72	100	10	200	
73	100	10	200	
74	100	10	200	
75	100	10	200	
76	100	10	200	
77	100	10	200	
78	100	10	200	
79	100	10	200	
80	100	10	200	
81	100	10	200	
82	100	10	200	
83	100	10	200	
84	100	10	200	
85	100	10	200	
86	100	10	200	
87	100	10	200	
88	100	10	200	
89	100	10	200	
90	100	10	200	
91	100	10	200	
92	100	10	200	
93	100	10	200	
94	100	10	200	
95	100	10	200	
96	100	10	200	
97	100	10	200	
98	100	10	200	
99	100	10	200	
100	100	10	200	

**RESUMO DO AÇO**  
RESUMO DO AÇO DE ARMADURA  
RESUMO DO AÇO DE REFORÇO

ITEM	QUANTIDADE	DIÂMETRO	ESPAÇAMENTO	REMARKS
1	100	10	200	
2	100	10	200	
3	100	10	200	
4	100	10	200	
5	100	10	200	
6	100	10	200	
7	100	10	200	
8	100	10	200	
9	100	10	200	
10	100	10	200	
11	100	10	200	
12	100	10	200	
13	100	10	200	
14	100	10	200	
15	100	10	200	
16	100	10	200	
17	100	10	200	
18	100	10	200	
19	100	10	200	
20	100	10	200	
21	100	10	200	
22	100	10	200	
23	100	10	200	
24	100	10	200	
25	100	10	200	
26	100	10	200	
27	100	10	200	
28	100	10	200	
29	100	10	200	
30	100	10	200	
31	100	10	200	
32	100	10	200	
33	100	10	200	
34	100	10	200	
35	100	10	200	
36	100	10	200	
37	100	10	200	
38	100	10	200	
39	100	10	200	
40	100	10	200	
41	100	10	200	
42	100	10	200	
43	100	10	200	
44	100	10	200	
45	100	10	200	
46	100	10	200	
47	100	10	200	
48	100	10	200	
49	100	10	200	
50	100	10	200	
51	100	10	200	
52	100	10	200	
53	100	10	200	
54	100	10	200	
55	100	10	200	
56	100	10	200	
57	100	10	200	
58	100	10	200	
59	100	10	200	
60	100	10	200	
61	100	10	200	
62	100	10	200	
63	100	10	200	
64	100	10	200	
65	100	10	200	
66	100	10	200	
67	100	10	200	
68	100	10	200	
69	100	10	200	
70	100	10	200	
71	100	10	200	
72	100	10	200	
73	100	10	200	
74	100	10	200	
75	100	10	200	
76	100	10	200	
77	100	10	200	
78	100	10	200	
79	100	10	200	
80	100	10	200	
81	100	10	200	
82	100	10	200	
83	100	10	200	
84	100	10	200	
85	100	10	200	
86	100	10	200	
87	100	10	200	
88	100	10	200	
89	100	10	200	
90	100	10	200	
91	100	10	200	
92	100	10	200	
93	100	10	200	
94	100	10	200	
95	100	10	200	
96	100	10	200	
97	100	10	200	
98	100	10	200	
99	100	10	200	
100	100	10	200	

**RESERVATÓRIO 1  
ARMACÃO POSITIVA DAS LAJES (-225.0) - FUNDO  
ESCALA 1:50**



**ENGENHARIA**

**ESTRUTURA**

UNB / FM  
FACULDADE DE ENGENHARIA  
CURSO DE ENGENHARIA DE ESTRUTURAS

**EST 06/06**  
PROFESSOR: DR. JOSÉ CARLOS DE ALMEIDA  
ALUNO: DR. JOSÉ CARLOS DE ALMEIDA





